

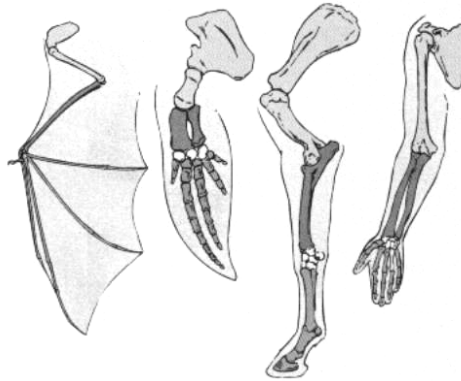


Vertebrate limbs are constructed on the same five-digit pattern. Descent from a common ancestor is the logical explanation

I think the similarity can be explained equally well in terms of form or function



(Bat, Porpoise, Horse, Human)



These limbs share a similar plan because they were created by a common Designer

This five-digit pattern reflects physical constraints imposed by geometry, bone growth, and the laws of nature



Structural Homology

Central Diagram © Jody Sjogren

What do YOU think?